

# SUPERB RETAIL OR CAFÉ SPACE IMMEDIATE OCCUPATION



## 163 WEST GREEN STREET PASADENA, CALIFORNIA 91105

- ✦ APPROX. 1,200 RENTABLE SQ. FT.
- ✦ NEARBY PARKING STRUCTURES & STREET PARKING
- ✦ QUALITY BUILD-OUT INCLUDES:
  - HVAC SYSTEM
  - LIGHTING
  - OFFICE & RESTROOM
  - IDEAL FOR RETAIL OR CAFÉ USE\*
- ✦ 5-YEAR TERM

\*SUBJECT TO REQUIRED CONSENTS



For additional information:

Leon Saroff  
leons@sauveriegel.com

Bob Riegel  
bob.riegel@sauveriegel.com

**626.585.4321**

12 So. Raymond Avenue, Suite A  
Pasadena, California 91105  
www.sauveriegel.com

626.683.3990 fax

**Sauvé Riegel**  
Commercial Real Estate

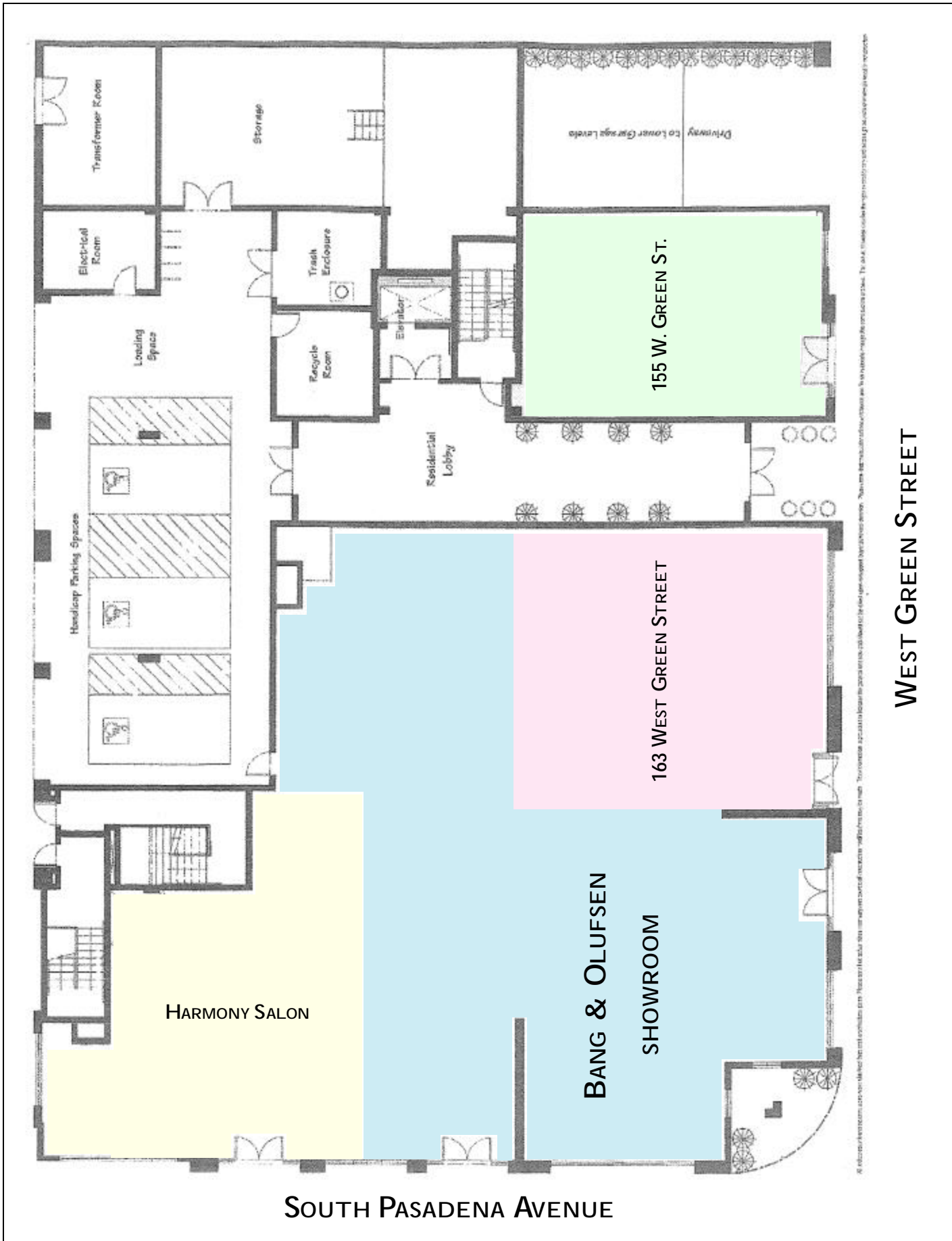
NEXT TO THE NEW  
BANG & OLUFSEN  
SHOWROOM

NEARBY UPSCALE  
RETAILERS  
AND  
RESTAURANTS



TIFFANY & CO.  
KENNETH COLE  
ABERCROMBIE & FITCH  
H & M  
POTTERY BARN  
GUESS  
BARNES & NOBLE  
BANANA REPUBLIC  
DELACEY'S CLUB 41  
TWIN PALMS  
APPLE COMPUTER STORE

CRATE & BARREL  
VILLA SORRISO  
DIESEL  
CHICO'S  
URBAN OUTFITTERS  
SUR LA TABLE  
GAP  
BURKE WILLIAMS SPA  
RESTORATION HARDWARE  
PAPYRUS  
CHEESECAKE FACTORY  
VICTORIA'S SECRET  
FOREVER 21  
THE MELTING POT  
J. CREW  
LA LUNA NEGRA



All information herein is based on information provided by the owner and is not intended to constitute an offer of any financial product. The information is provided for informational purposes only and should not be relied upon for investment decisions. The information is provided for informational purposes only and should not be relied upon for investment decisions.

The information contained herein has been obtained from sources which are deemed reliable. While we have no reason to doubt its accuracy, we do not guarantee it and assume no liability for any inaccuracies or omissions.