

# PRIME START-UP UNITS AVAILABLE IN OLD PASADENA 475 UP TO 3,594 SQ. FT. (APPROX. 2,005 RSF CONTIGUOUS)



## 107 SOUTH FAIR OAKS AVENUE, PASADENA

### 12-MONTHS LEASE

Rental Rate: Please call for information.



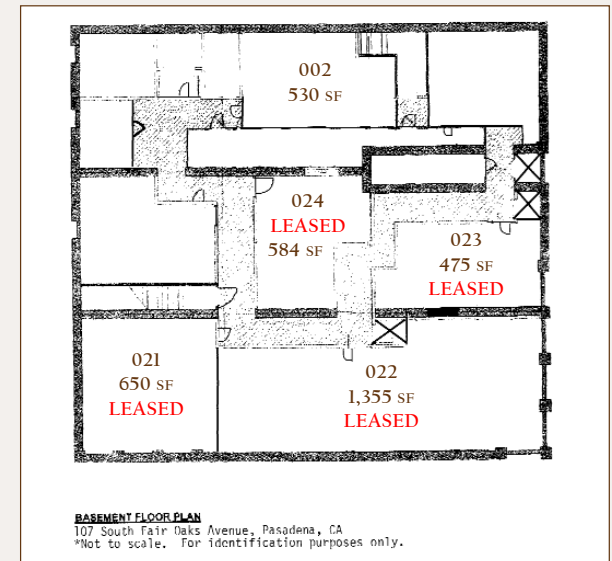
- Desirable Old Pasadena Location
- Ideal for Start-Up Businesses
- Extremely Secure 24 Hour Access
- Impressive Fully Renovated Historic Building
- Street Parking and Nearby Parking Structure
- Loading Access from Rear Yard

■ For information, please contact:

626.585.4321

Leon Saroff [leons@sauveriegel.com](mailto:leons@sauveriegel.com)

Bob Riegel [bob.riegel@sauveriegel.com](mailto:bob.riegel@sauveriegel.com)



**Sauvé Riegel**  
Commercial Real Estate

12 South Raymond Avenue, Suite A ■ Pasadena, California 91105  
626.683.3990 fax ■ [www.sauveriegel.com](http://www.sauveriegel.com)