

Sub-Lease - Office Space in Old Pasadena, CA

101 E. GREEN STREET, SUITE 7, APPROX. 894 RSF



Within the Historic Livery Building

Approx. 894 RSF First Floor Office Suite

Dramatic Open Plan Design - "Wall of Glass" Partition & Other Architectural Features

Accessible from Mercantile Alley

Close to City Parking Structures - Easy Access to #210 Freeway & Metro Gold Line

Existing Lease to April, 2013 - Longer New Lease Possible

Current Rent: \$2,159/Mo/FSG

For information please call 626.585.4321

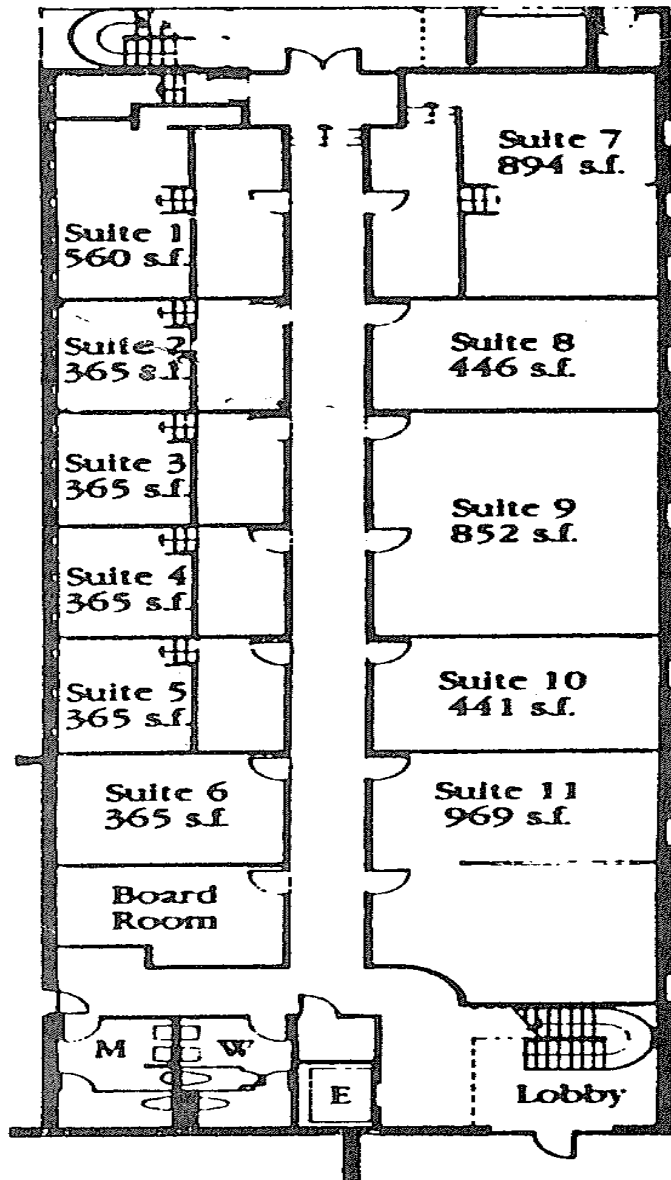
Norm Sauve: nsauve@sauveriegel.com DRE #00937271

Leon Saroff: leons@sauveriegel.com DRE#01435173

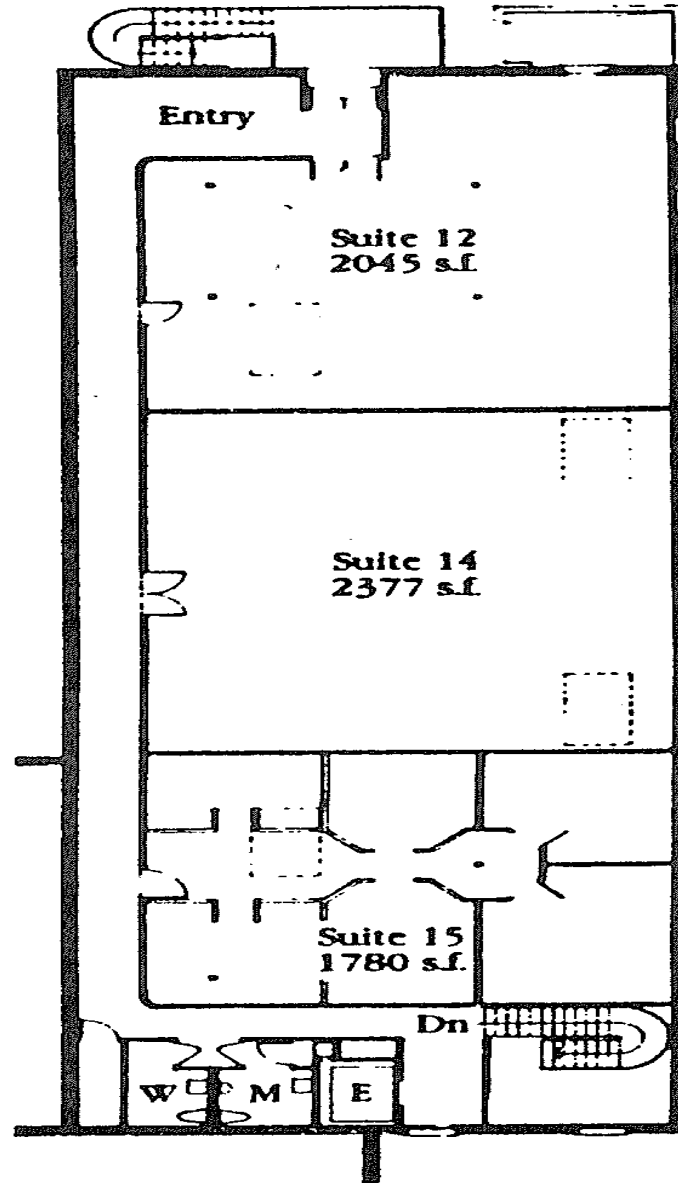
Sauvé Riegel
Commercial Real Estate

12 South Raymond Avenue, Suite A ■ Pasadena, California 91105

626.683.3990 fax ■ www.sauveriegel.com



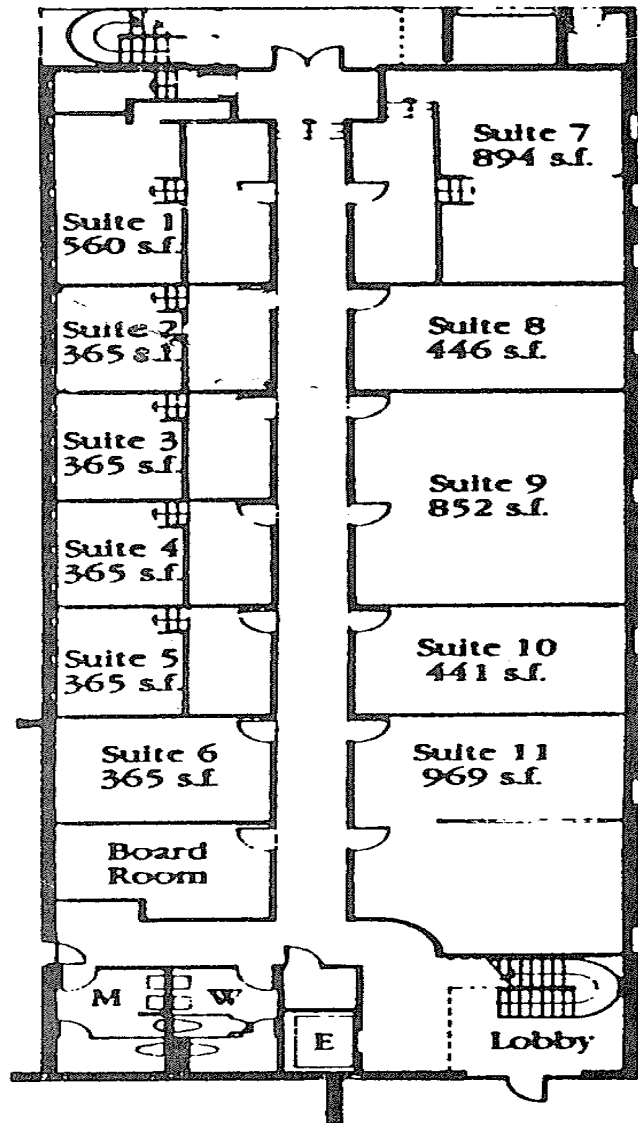
First Level Plan



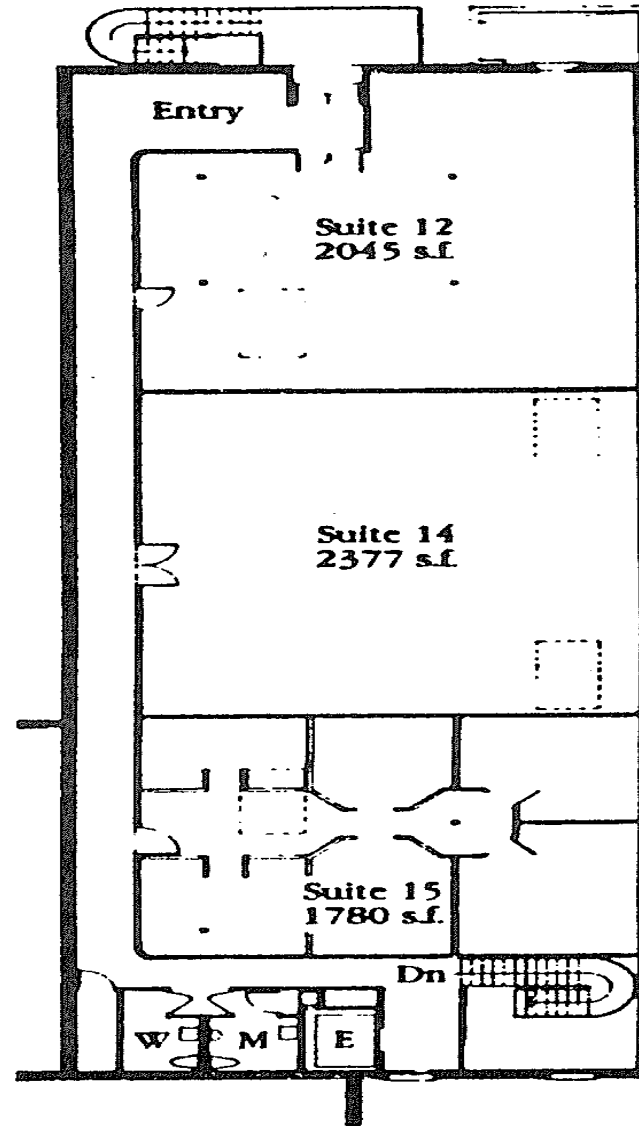
Second Level Plan

This square footage per space includes common area allocations.

PASADENA LIVERY BUILDING
101 East Green Street, Pasadena



First Level Plan



Second Level Plan

This square footage per space includes common area allocations.

PASADENA LIVERY BUILDING
101 East Green Street, Pasadena