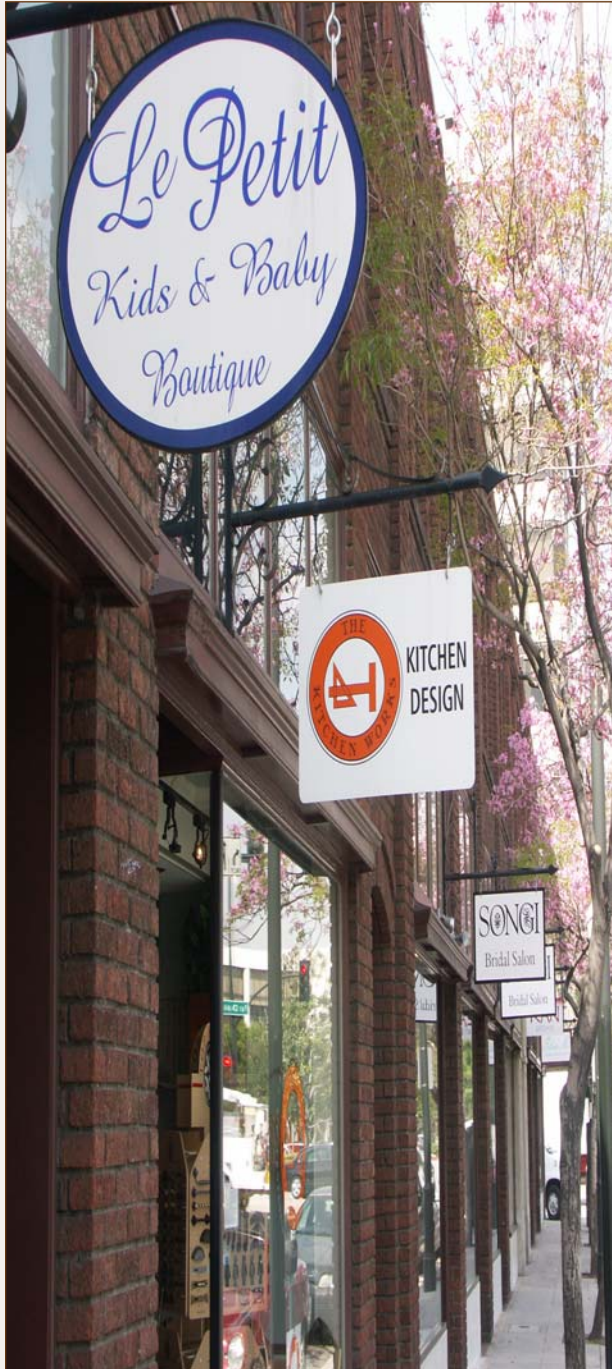


FOR LEASE - RETAIL SPACE
OLD PASADENA

Great Location for a Short Term Retail Start-Up!



16 EAST HOLLY STREET
APPROX. 1245 RENTABLE SQ. FT.

Rental Rate: \$3.23/RSF, NNN

- Centrally located in Old Pasadena -
- Beautiful historic building-
- Charming streetscape-
- Ideal for a boutique, gallery or other retail
- Easy Metro Gold Line access-
- Street parking and nearby public parking garages which offer 90 minutes free

Available Immediately!

For information, please contact:

626.585.4321

Norm Sauvé nsauve@sauveriegel.com

DRE # 00937271

Bob Riegel bob.riegel@sauveriegel.com

DRE # 00961094

WWW.SAUVERIEGEL.COM

Sauvé Riegel
Commercial Real Estate

12 South Raymond Avenue, Suite A ■ Pasadena, California 91105
626.683.3990 fax ■ www.sauveriegel.com

The information contained herein has been obtained from sources which are deemed reliable. While we have no reason to doubt its accuracy, we do not guarantee it and assume no liability for any inaccuracies or omissions.