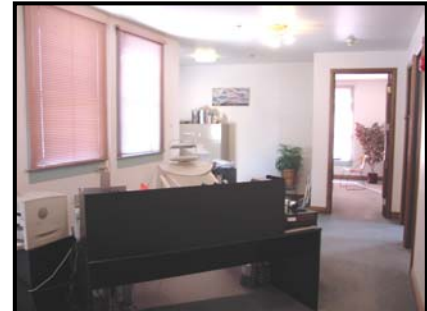


THE HOLLY BUILDING



*4 East Holly Street, Suite 215
Pasadena, California*

SECOND FLOOR OFFICE SUITE

- Approximately **552** Rentable Square Feet
- \$2.50/SF, Full Service Gross
- Available March 31 (or sooner)

FEATURES

2 Private offices, shared common area kitchenette, above standard tiled restrooms, wood trim, special lighting, skylights, secured front door entry, 24 hour access, HVAC for all units, North Facing mountain views, superb freeway access to Foothill 210 & Ventura 134 freeways. The tenant mix is a combination of quality professionals.



Sauvé Riegel
Commercial Real Estate

12 South Raymond Avenue, Suite A
Pasadena, California 91105
www.sauveriegel.com
Tel: (626) 585-4321 Fax: (626) 683-3990

For Additional Information Contact:

Norm Sauvé

NSauve@sauveriegel.com

DRE # 00937271

Bob Riegel

Bob.Riegel@sauveriegel.com

DRE # 00961094

