

Office Space for Lease

1515 Hope Street, South Pasadena, CA



- Office Space in South Pasadena
- Perfect for Small Business
- Spacious, Bright & Airy
- Common Kitchen, Break Room & Outdoor Patio
- South Pasadena Schools Open to Business Tenants
- Easy Access to 110 Freeway & Old Pasadena
- Minutes to Downtown L.A.

FREE PARKING
In Adjacent Public Lot



- Suite 203 - Approx. 340 RSF
- Suite 204 - Approx. 915 RSF
- Suite 205 - Approx. 528 RSF

Rental Rate: \$1.75/RSF/FSG

Leon Saroff ~ leons@sauveriegel.com

DRE # 01435173

Norm Sauvé ~ nsauve@sauveriegel.com

DRE # 00937271

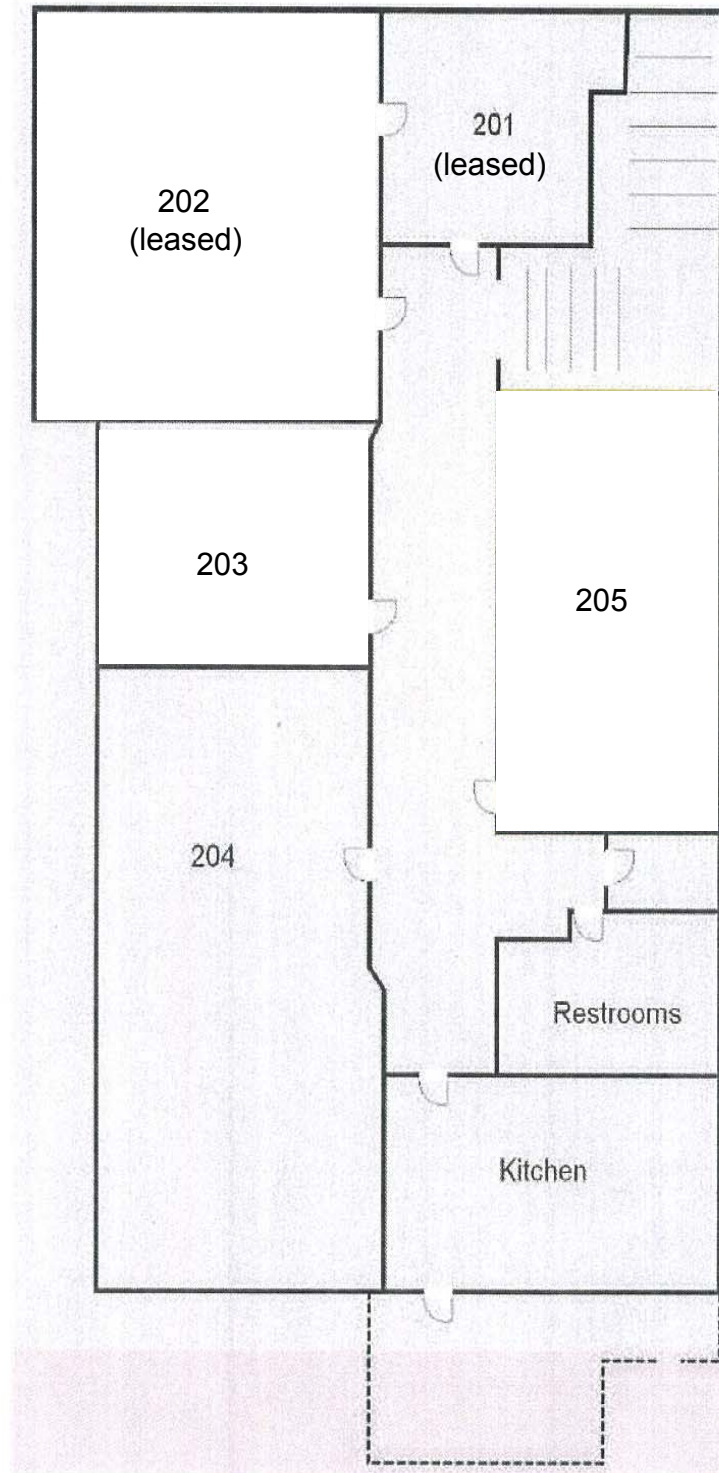
Sauvé Riegel
Commercial Real Estate

www.sauveriegel.com

12 South Raymond Avenue, Suite A ■ Pasadena, California 91105
626.683.3990 fax ■ www.sauveriegel.com

The information contained herein has been obtained from sources which are deemed reliable. While we have no reason to doubt its accuracy, we do not guarantee it and assume no liability for any inaccuracies or omissions.

1515 Hope Street, South Pasadena



Floor Plan