

2450 N. LAKE AVE. ALTADENA

APPROXIMATELY 2,000 R.S.F FOR LEASE



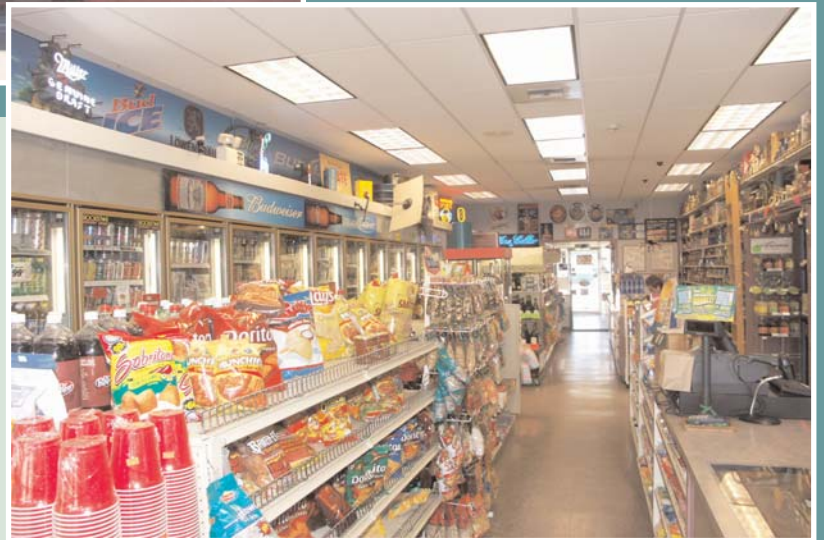
COLD COOLER
WALL UNITS

CONDITIONAL
USE ALCOHOL
PERMIT

Call Broker For Rental
Rate

SUGGESTED USE:

- DELI & COFFEE SHOP
- PRODUCE STORE
- FAST FOOD
- GENERAL RETAIL OR MEDICAL



PROPERTY ATTRIBUTES:

LOCATED IN GROWTH AREA FOR NEW BUSINESS
LOCATED IN AN ENTERPRISE ZONE WITH
EXCELLENT VISABILITY & SIGNAGE
BENEFITS TO CERTAIN TENANTS
UNLIMITED PARKING!

CONTACT:

NORM SAUVE AT NSAUVE@SAUVERIEGEL.COM
BOB RIEGEL AT BOB.RIEGEL@SAUVERIEGEL.COM

Sauvé Riegel
Commercial Real Estate

12 S. Raymond Ave., Suite A
Pasadena, California 91105
626.585.4321 phone
626.683.3990 fax

WWW.SAUVERIEGEL.COM