

OFFICE SPACE FOR LEASE SOUTH LAKE AVE AREA ~ PASADENA



172 SHOPPERS LANE

BEHIND 170 SOUTH LAKE AVENUE

Located in the Desirable
South Lake Shopping District

Approx. 900 RSF Office

\$1.50 per SF/Month + \$0.35 NNN/SF
\$1,350.00 rent + \$315.00 nnn = \$1,665.00

Two Private Parking Spaces Free



Pasadena's South Lake Ave. is a
destination shopping area for the
San Gabriel Valley with numerous
shops, restaurants & professional
offices.



For information, please contact:

626.585.4321

Bob Riegel bob.riegel@sauveriegel.com

DRE # 00961094

Norm Sauvé nsauve@sauveriegel.com

DRE # 00937271

WWW.SAUVERIEGEL.COM

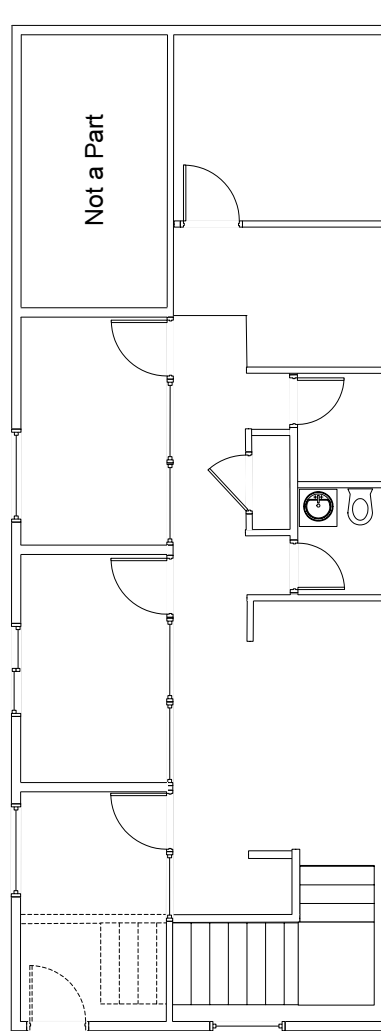
Sauvé Riegel
Commercial Real Estate

12 South Raymond Avenue, Suite A ■ Pasadena, California 91105
626.683.3990 fax ■ www.sauveriegel.com

The information contained herein has been obtained from sources which are deemed reliable.
While we have no reason to doubt its accuracy, we do not guarantee it and assume no liability for any inaccuracies or omissions.

Second Floor Office

172 Shopper's Lane
(Back of 170 South Lake Ave)
Pasadena, CA 91106



First Floor Entry

**Floorplan measurements are approximate and are not for construction purposes.*