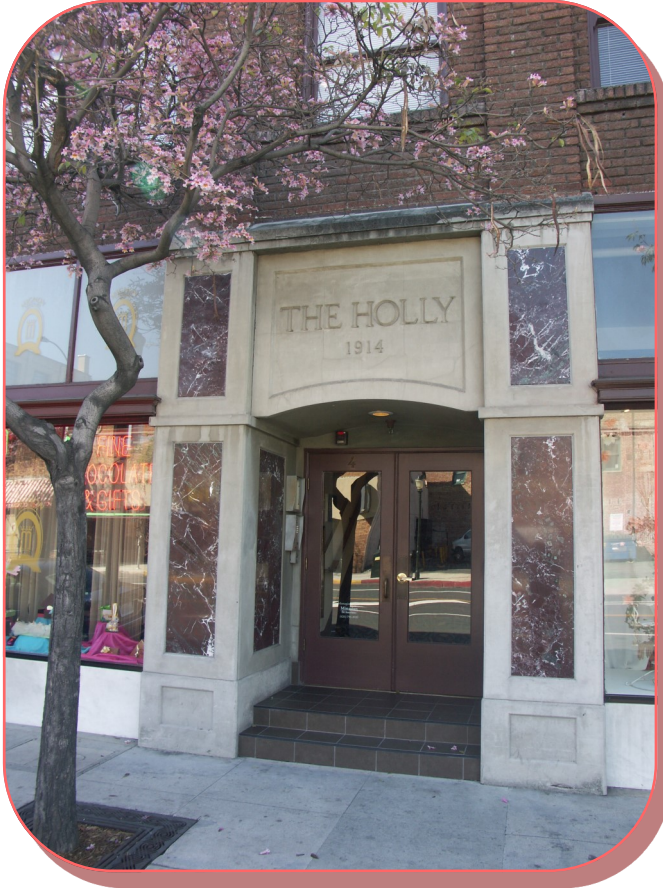


# Office Space for Lease in Holly Building

4 East Holly Street, Pasadena, CA 91105

---



## 4 East Holly Street

Located on Charming Holly Street, some office spaces have beautiful mountain views.

Quiet and convenient, within walking distance of all the amenities of Old Pasadena, the office spaces are perfect for any professionals.

There is a shared common kitchenette, above standard tiled restrooms, wood trim, special lighting, skylights as well as plenty of windows affording natural light. The secured front door allows 24 hour access. All units have HVAC. Easy access to the 210 and 134 Freeways as well as the Metro Gold Line.

Street parking free until 11 a.m. with 90 mins. free parking in city structures.

## Second Floor Suite Available:

**Suite # 209 Approx. 267 RSF @ \$2.55/RSF/MO/FS**

---

Call 626.585.4321 for more information.

Norm Sauvé [nsauve@sauveriegel.com](mailto:nsauve@sauveriegel.com) BRE # 00937271

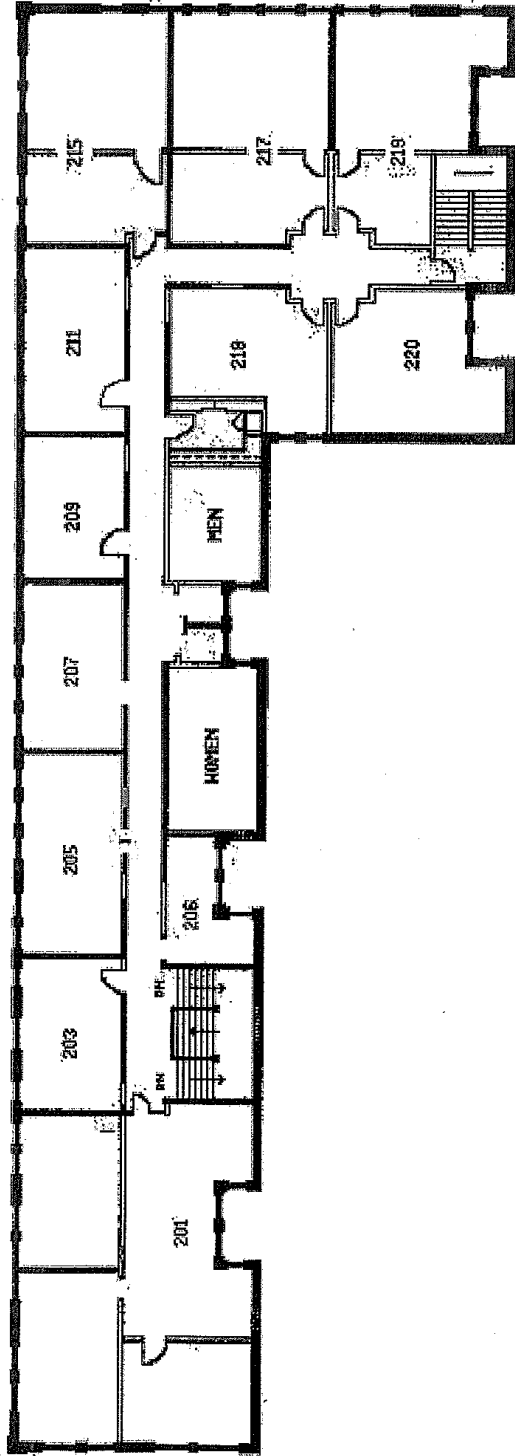
Bob Riegel [bob.riegel@sauveriegel.com](mailto:bob.riegel@sauveriegel.com) BRE # 00961094

Sauvé Riegel Commercial Real Estate, 12 South Raymond Avenue, Suite A, Pasadena, CA 91105

[www.sauveriegel.com](http://www.sauveriegel.com)

BRE # 01213285

**Sauvé Riegel**  
Commercial Real Estate



#4 East Holly Street - Second Floor